

PART 8

MANAGEMENT STRUCTURE

Management Structure

Full Members of the Strategic Management Team (SMT)*

- Chief Executive
- Deputy Chief Executive and City Treasurer
- City Solicitor
- Strategic Director (Children's and Education Services)
- Executive Director of Adult Social Services
- Strategic Director (Growth and Development)
- Strategic Director (Neighbourhoods)
- Director of Population Health and Wellbeing
- **Assistant Chief Executive**

Chief Officers

- The full members of SMT

Statutory Officers

- | | |
|-------------------------------------|----------------------------------------------------------|
| • Head of Paid Service | - Chief Executive |
| • Chief Finance Officer | - Deputy Chief Executive and City Treasurer |
| • Monitoring Officer | - City Solicitor |
| • Director of Children's Services | - Strategic Director (Children's and Education Services) |
| • Director of Adult Social Services | - Executive Director of Adult Social Services |
| • Director of Public Health | - Director of Population Health and Wellbeing |
| • Deputy Chief Finance Officer | - Deputy City Treasurer |
| • Deputy Monitoring Officer | - Deputy City Solicitor |
| • Scrutiny Officer | - Governance and Scrutiny Support Unit Manager |

*While other senior officers may attend SMT on an occasional or regular basis, only the listed officers are considered full members of SMT for the purposes of Part 8 of the Council's Constitution.

Deputy Chief Officers/Heads of Service

Directorate/Division	Deputy Chief Officer/Head of Service
Corporate Core: excluding City Solicitor's <u>Division</u>	Deputy City Treasurer Director of HR and OD Director of Capital Programmes Director of Customer Services and Transactions Director of ICT Director of Policy, Performance and Reform Head of Audit and Risk Management
Corporate Core: City Solicitor's <u>Division</u>	Deputy City Solicitor Head of Strategic Communications <u>Head of Chief Executive Office</u> Head of Electoral Services <u>Head of Protocol Civic and Ceremonial</u> <u>Head of Registrars and Coroners</u> Registration and Coroners Service Manager
Neighbourhoods	Director of Highways <u>Director of Housing Operations</u> <u>Director of Neighbourhood Delivery</u> Director of Commercial and Operations Head of Service (Compliance and Community Safety) Head of Service (Libraries, Galleries and Culture) Head of Service (Parks, Leisure, Youth and Events) Head of Neighbourhood Management
Adult Social Services	Deputy Director of Adult Social Services Director of Homelessness Assistant Director (<u>Learning Disability, Transition and</u> Complex Needs) Assistant Director (<u>Hospitals, Integrated Contacts and TEC</u> Front Door) Assistant Director (Neighbourhoods <u>s and Safeguarding Teams</u>) Programme Lead for Health & Social Care Integration

Population Health & Wellbeing

Assistant Director of Public Health
Assistant Director of Public Health
Assistant Director of Public Health
~~Public Health Consultant~~
~~Public Health Consultant~~
Strategic Lead (Population Health
Programmes)
Strategic Head of Health Intelligence

Children's & Education Services

Deputy Strategic Director ~~of Children's
Services~~
Director of Education
Strategic Lead Safeguarding and
Practice Improvement
Strategic Lead Commissioning

Growth and Development:

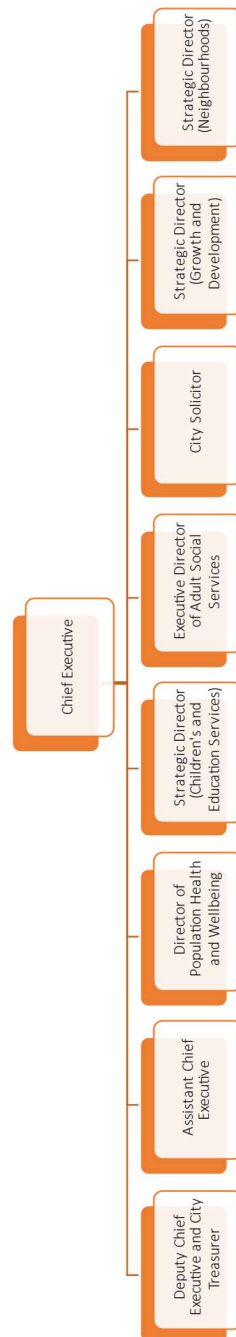
Assistant Director Major Regeneration
Director of City Centre Growth and
Infrastructure
Director of Development ~~and Corporate
Estate~~
~~Director of Housing and Residential
Growth~~
Director of Inclusive Economy Growth
Director of Planning, Building Control
and Licensing ~~and Building Control~~

Assistant Chief Executive's
Direct Reports

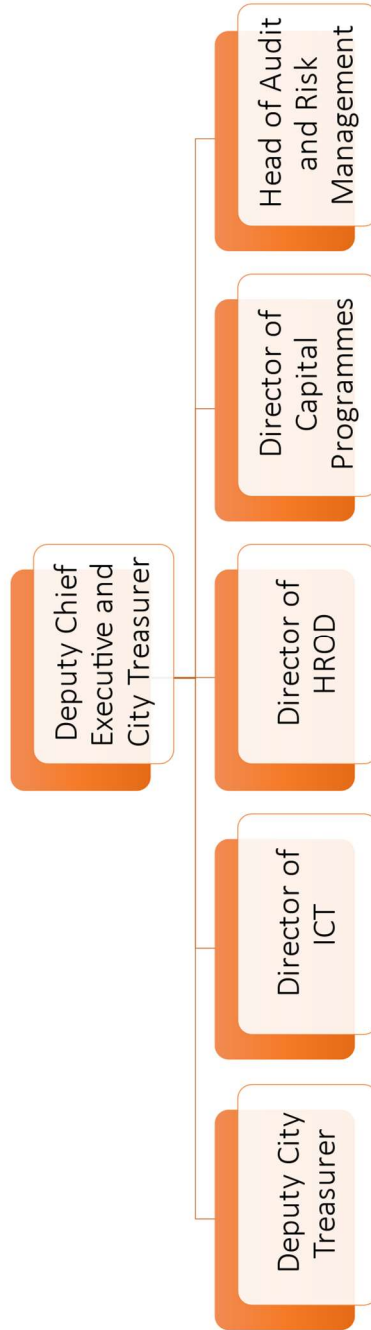
Head of City Policy
Head of Public Intelligence and
Performance
Head of Reform and Inclusion

Additional information on the Council's structure is published within the 'Open Data' section of the Council website in accordance with the DCLG Code of Recommended Practice on Data Transparency.

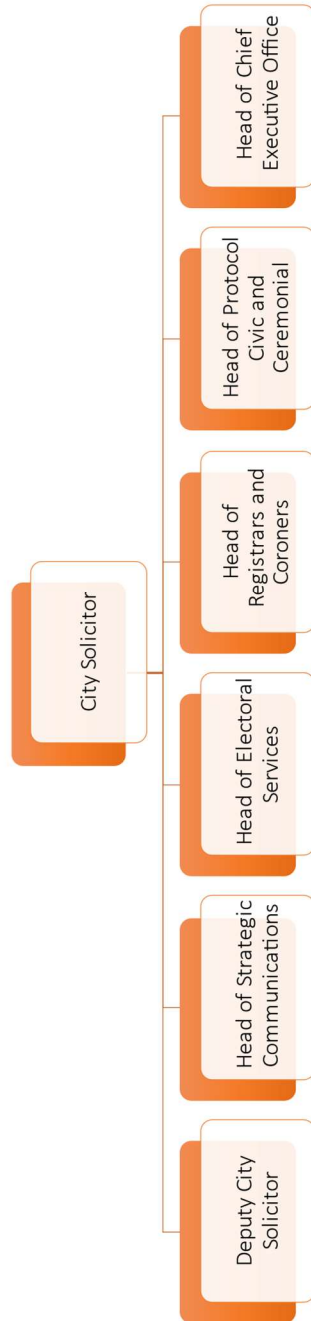
Full Members of the Strategic Management Team (SMT)



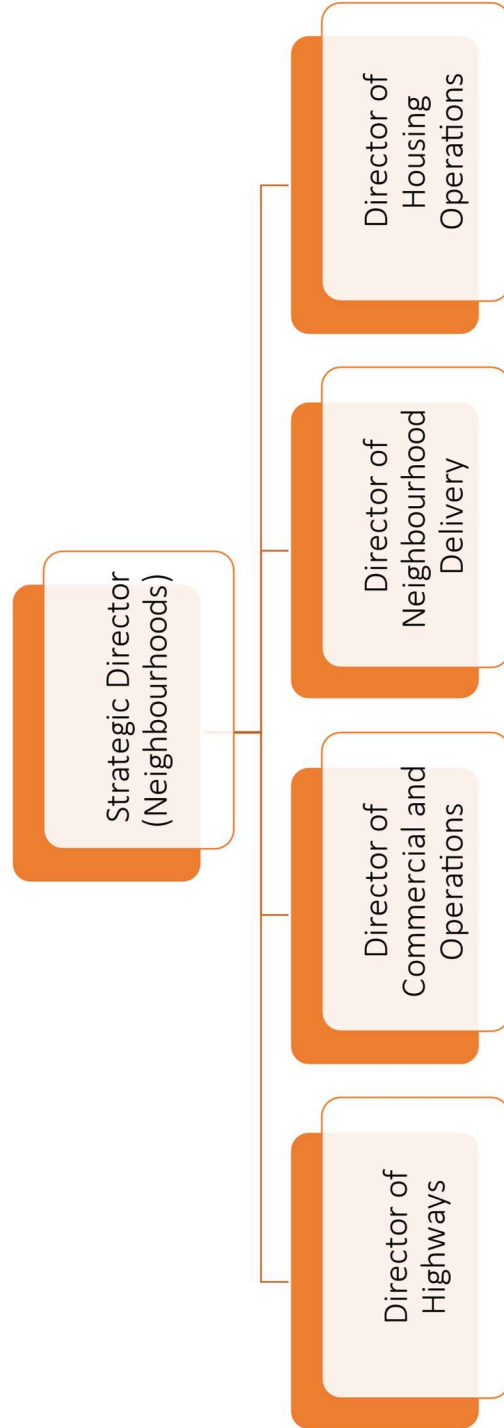
Corporate Core: excluding City Solicitor's Division



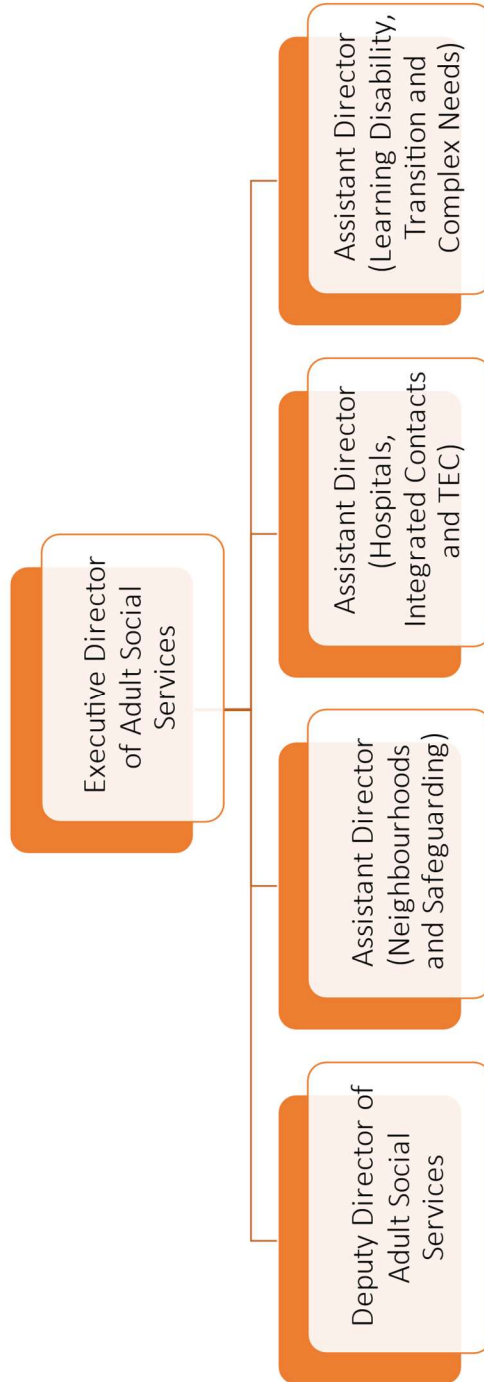
Corporate Core: City Solicitor's Division



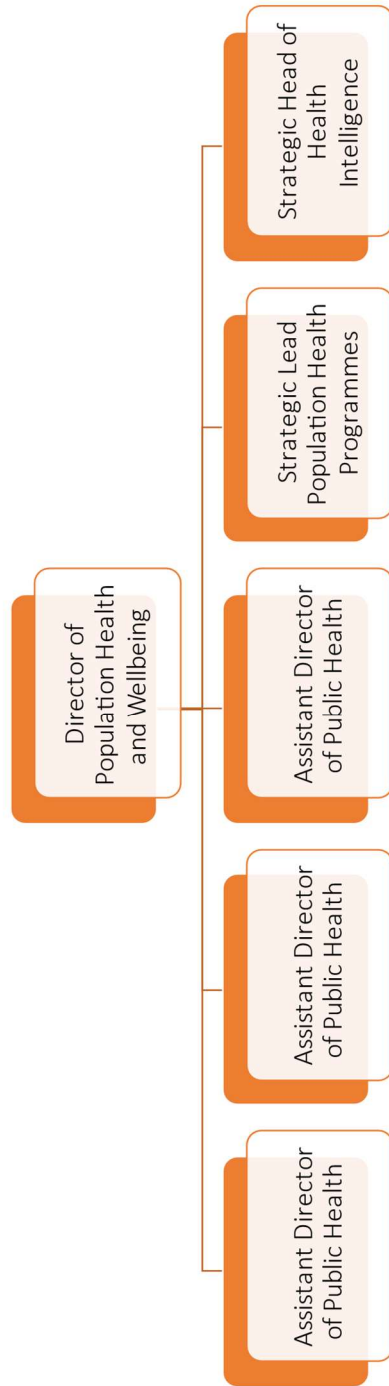
Neighbourhoods



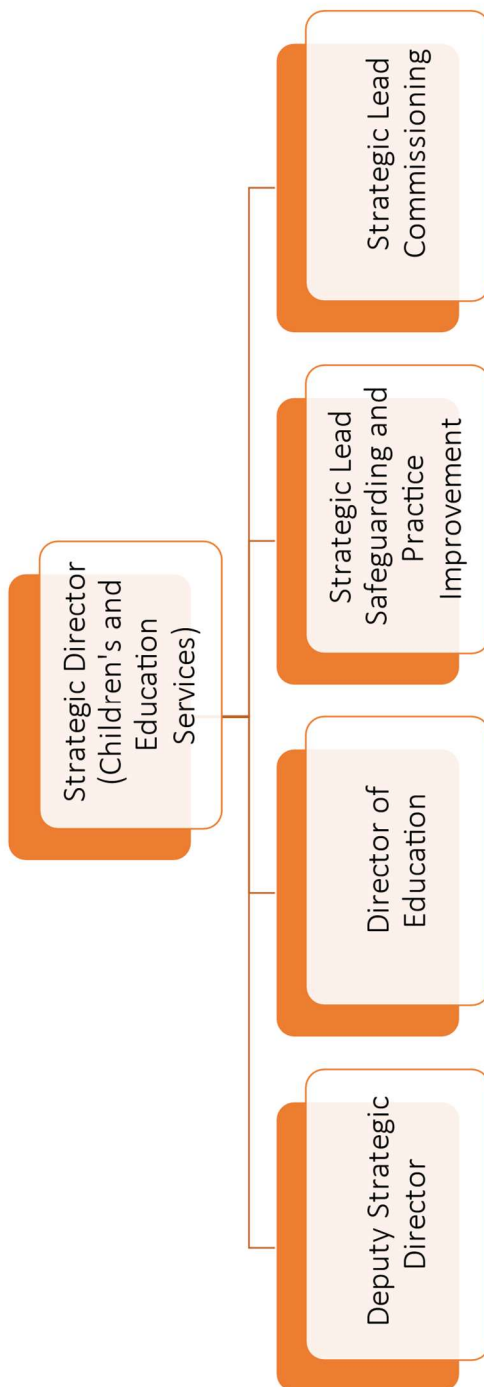
Adult Social Services



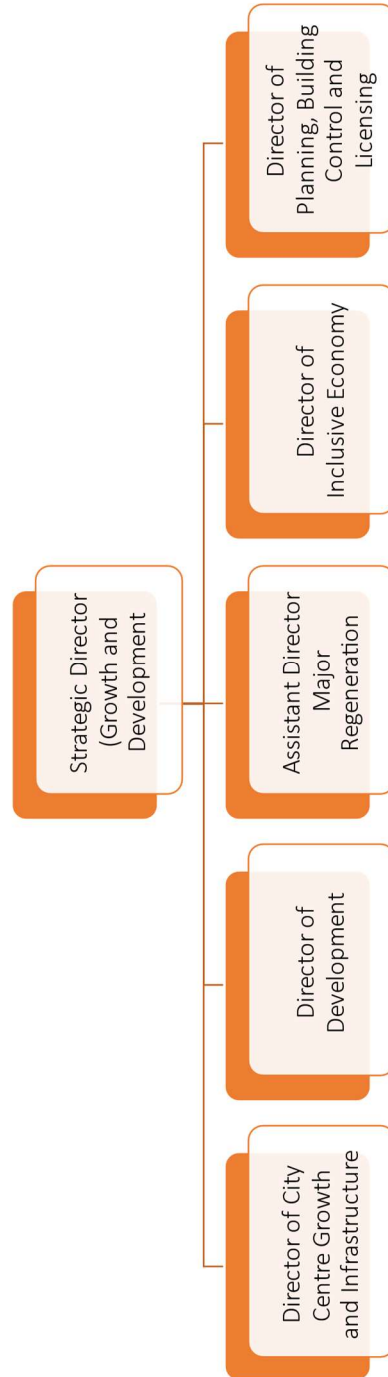
Population Health and Wellbeing



Children's and Education Services



Growth and Development



Assistant Chief Executive's direct reports

